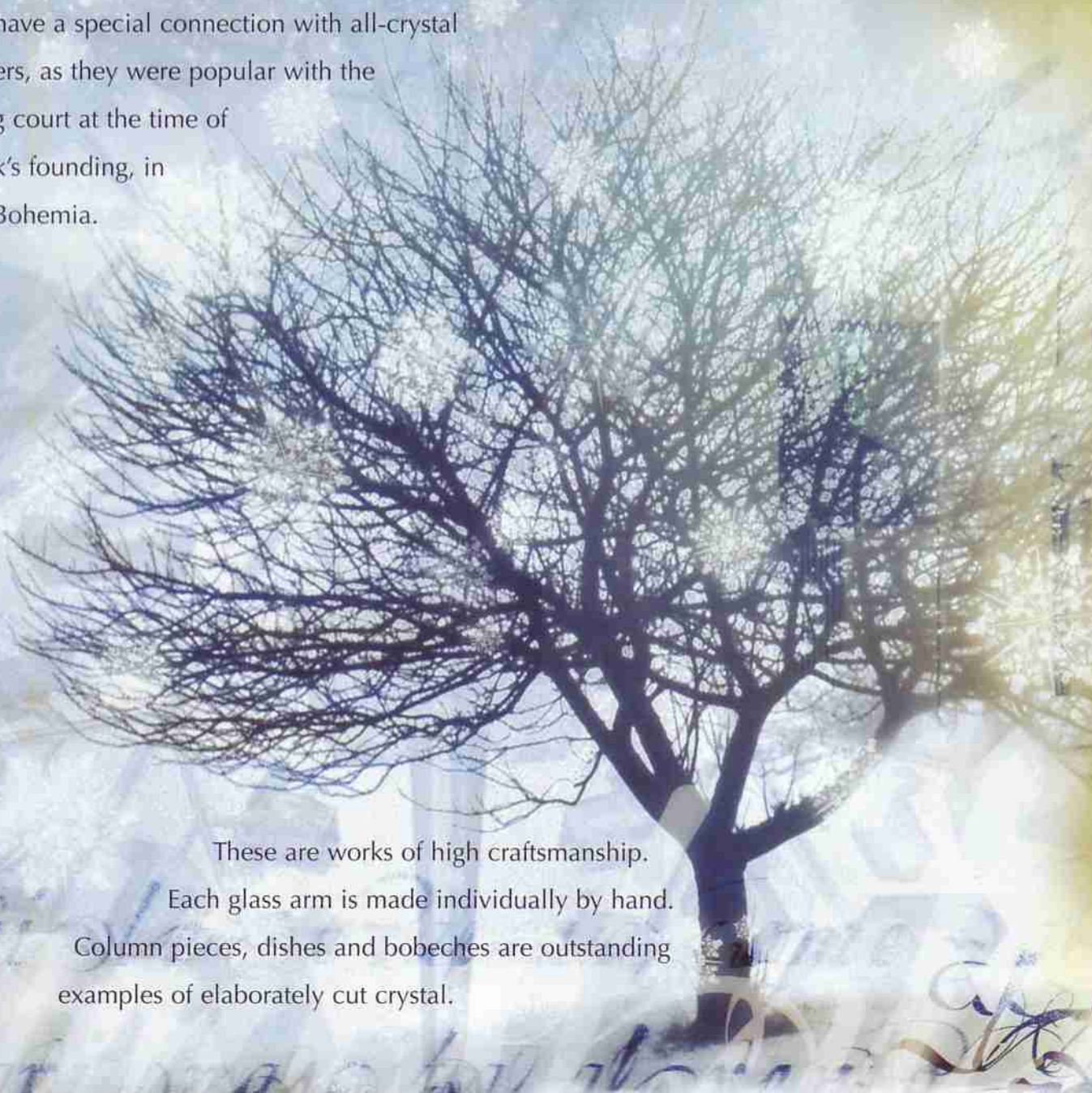


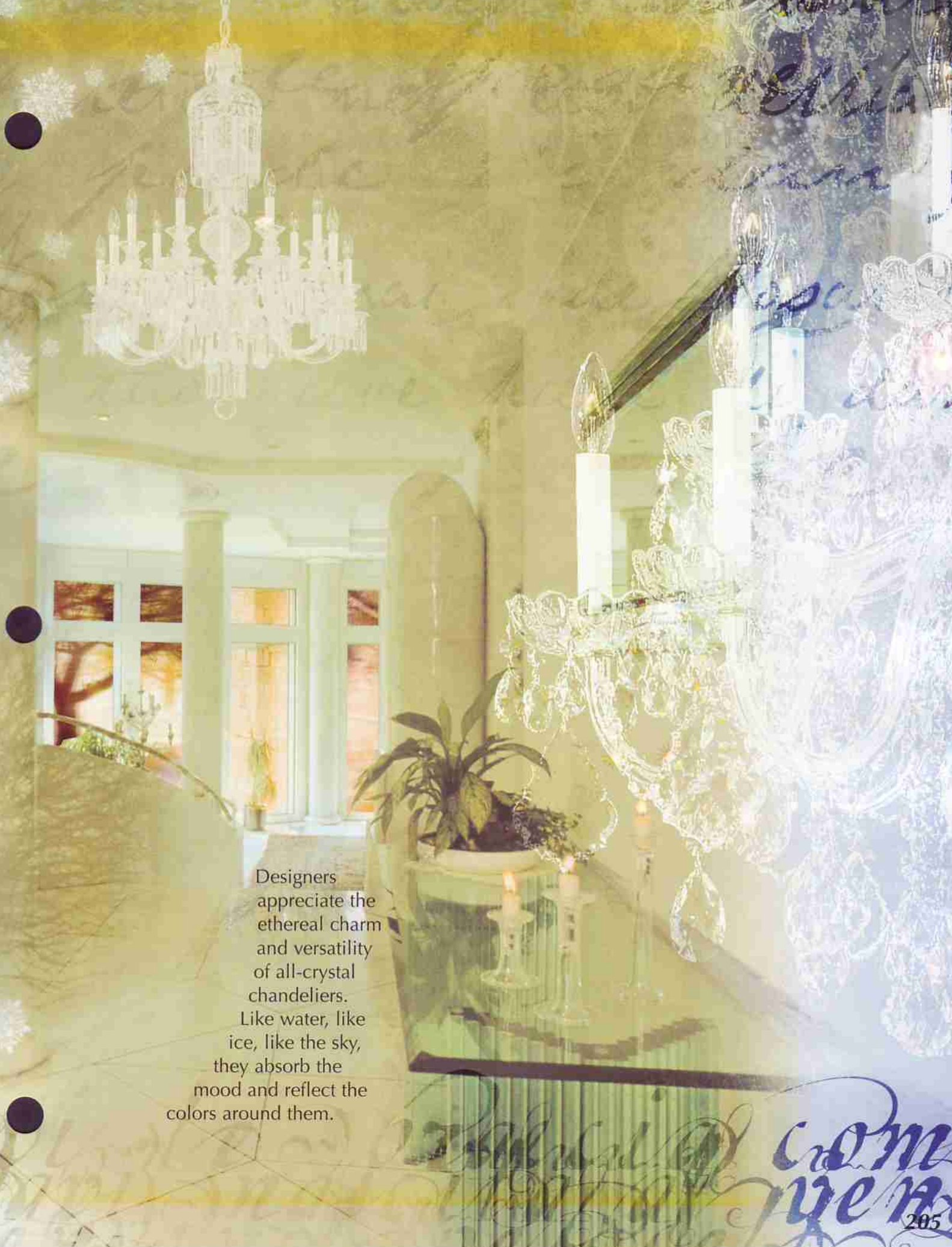
All Crystal

The all-crystal chandelier has exercised its fascination among lovers of beauty since the eighteenth century.

We have a special connection with all-crystal chandeliers, as they were popular with the Hapsburg court at the time of Schonbek's founding, in 1870 in Bohemia.



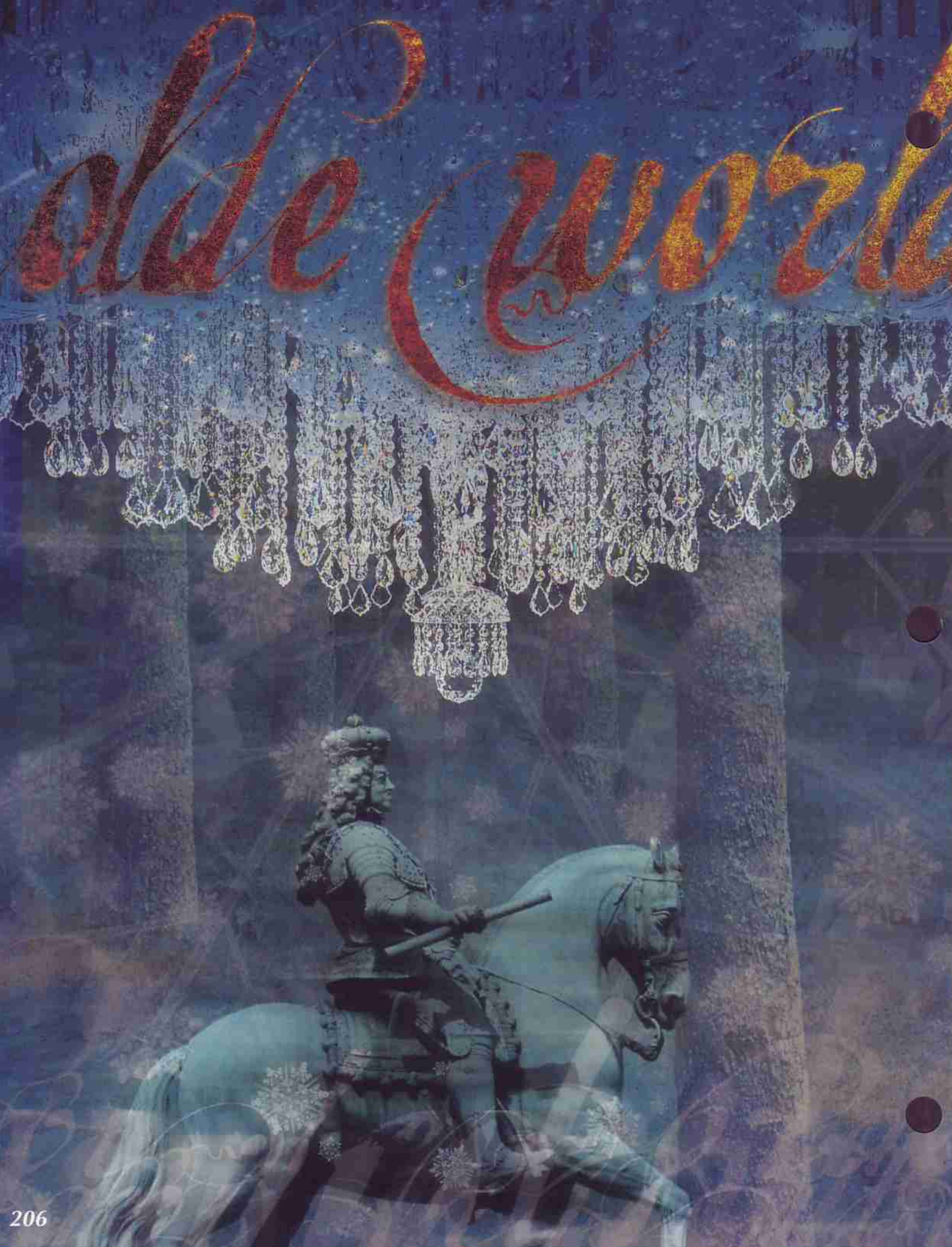
These are works of high craftsmanship. Each glass arm is made individually by hand. Column pieces, dishes and bobeches are outstanding examples of elaborately cut crystal.



Designers appreciate the ethereal charm and versatility of all-crystal chandeliers.

Like water, like ice, like the sky, they absorb the mood and reflect the colors around them.

com
ye
205



Olde World (Custom)

Crystal: Strass®

120 Lights (84 candles + 36 interior)

Diameter: 96" (244 cm)

Body Length: 150" (381 cm)

Silver (shown) or gold frame



To order this or other
custom sizes of Olde World,
call Schonbek at 800-836-1892.



Olde World (Custom)

Crystal: Strass®

45 Lights (40 candles + 5 interior)

Diameter: 60" (152 cm)

Body Length: 77" (196 cm)

Silver (shown) or gold frame



To order this or other
custom sizes of Olde World,
call Schonbek at 800-836-1892.



Olde World 6816

Crystal: Strass

35 Lights (30 candles + 5 interior)

Diameter: 48" (122 cm)

Body Length: 62" (157 cm)

Silver (shown) or gold frame



Olde World 6815

Crystal: Strass®

23 Lights (18 candles + 5 interior)

Diameter: 36" (91 cm)

Body Length: 52" (132 cm)

Gold (shown) or silver frame



Olde World 6860

Crystal: Strass

25 Lights (20 candles + 5 interior)

Diameter: 35 1/2" (90 cm)

Body Length: 46" (117 cm)

Silver (shown) or gold frame



Olde World 6814

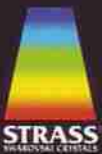
Crystal: Strass®

15 Lights

Diameter: 32" (81 cm)

Body Length: 40" (102 cm)

Silver (shown) or gold frame





Olde World 6813

Crystal: Strass

12 Lights

Diameter: 30" (76 cm)

Body Length: 39" (99 cm)

Gold (shown) or silver frame

Olde World 6812

Crystal: Strass®

9 Lights

Diameter: 27" (69 cm)

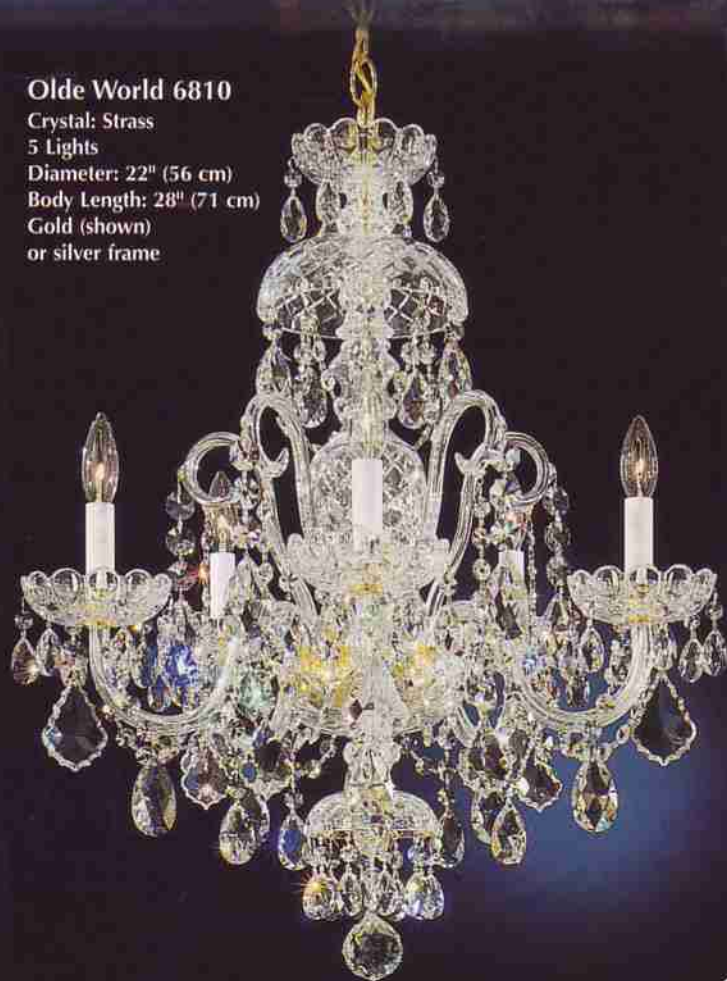
Body Length: 34½" (88 cm)

Silver (shown) or gold frame

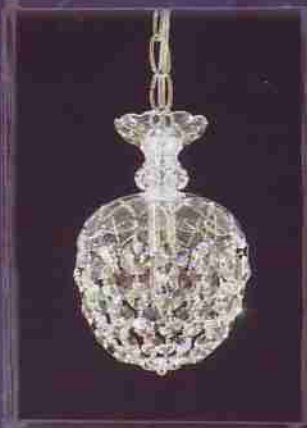




Olde World 6811
Crystal: Strass
7 Lights
Diameter: 25" (64 cm)
Body Length: 31" (79 cm)
Silver (shown) or gold frame

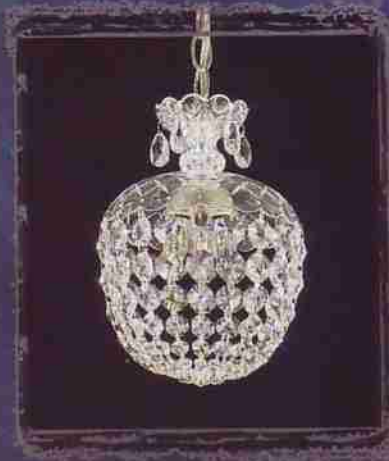


Olde World 6810
Crystal: Strass
5 Lights
Diameter: 22" (56 cm)
Body Length: 28" (71 cm)
Gold (shown)
or silver frame



Olde World 6862

Crystal: Strass®
1 Light
Diameter: 6" (15 cm)
Body Length: 9" (23 cm)
Silver (shown) or gold frame



Olde World 6863

Crystal: Strass
3 Lights
Diameter: 8" (20 cm)
Body Length: 12" (30 cm)
Silver (shown) or gold frame

Olde World 6864

Crystal: Strass
3 Lights
Diameter: 10" (25 cm)
Body Length: 15" (38 cm)
Silver (shown) or gold frame



Olde World 6807

Wall sconce
Crystal: Strass
2 Lights
Diameter: 14 1/2" (37 cm)
Body Length: 16" (41 cm)
Extension: 6" (15 cm)
Silver (shown) or gold frame



Olde World 6808

Wall sconce
Crystal: Strass
3 Lights
Diameter: 14 1/2" (37 cm)
Body Length: 20" (51 cm)
Extension: 7" (18 cm)
Silver (shown) or gold frame



Olde World 6805

Wall sconce
Crystal: Strass
1 Light
Diameter: 5" (13 cm)
Body Length: 15" (38 cm)
Extension: 7 1/2" (19 cm)
Silver (shown) or gold frame



Olde World 6806

Wall sconce
Crystal: Strass
5 Lights
Diameter: 18" (46 cm)
Body Length: 23" (58 cm)
Extension: 9 1/2" (24 cm)
Silver (shown) or gold frame

Olde World (Custom)

Crystal: Strass
30 Lights (25 candles + 5 interior)
Diameter: 36" (91 cm)
Body Length: 74" (188 cm)
Silver (shown) or gold frame



To order this or other
custom sizes of Olde World,
call Schonbek at 800-836-1892.

Olde World 6818

Crystal: Strass®

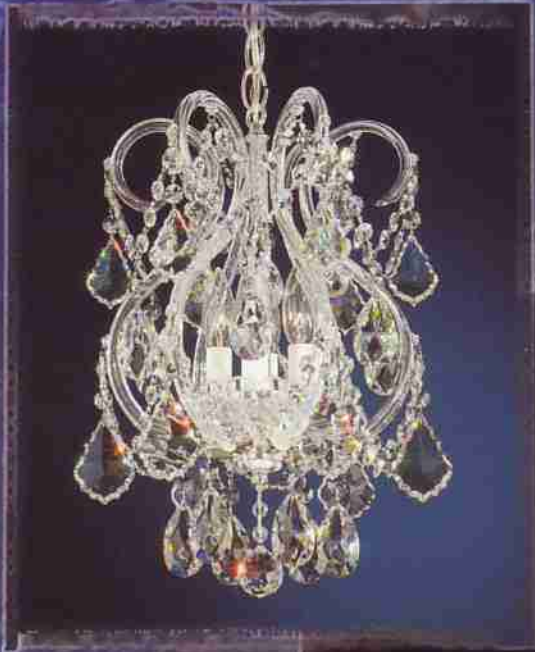
23 Lights (18 candles + 5 interior)

Diameter: 36" (91 cm)

Body Length: 68" (173 cm)

Silver (shown) or gold frame





Olde World 6809

Crystal: Strass
4 Lights
Diameter: 11" (28 cm)
Body Length: 17" (43 cm)
Silver (shown) or gold frame



Olde World 6817

Crystal: Strass
14 Lights
Diameter: 32" (81 cm)
Body Length: 55 1/2" (141 cm)
Silver (shown) or gold frame



Fairfax 5036

Wall sconce
Crystal: Heritage Handcut™
2 Lights
Diameter: 13" (33 cm)
Body Length: 12" (30 cm)
Extension: 8" (20 cm)

See wall sconce section
for additional designs.

Fairfax 5034
Crystal: Heritage Handcut™
14 Lights
Diameter: 32" (81 cm)
Body Length: 40" (102 cm)

Custom sizes available.
Call Schonbek at 800-836-1892.



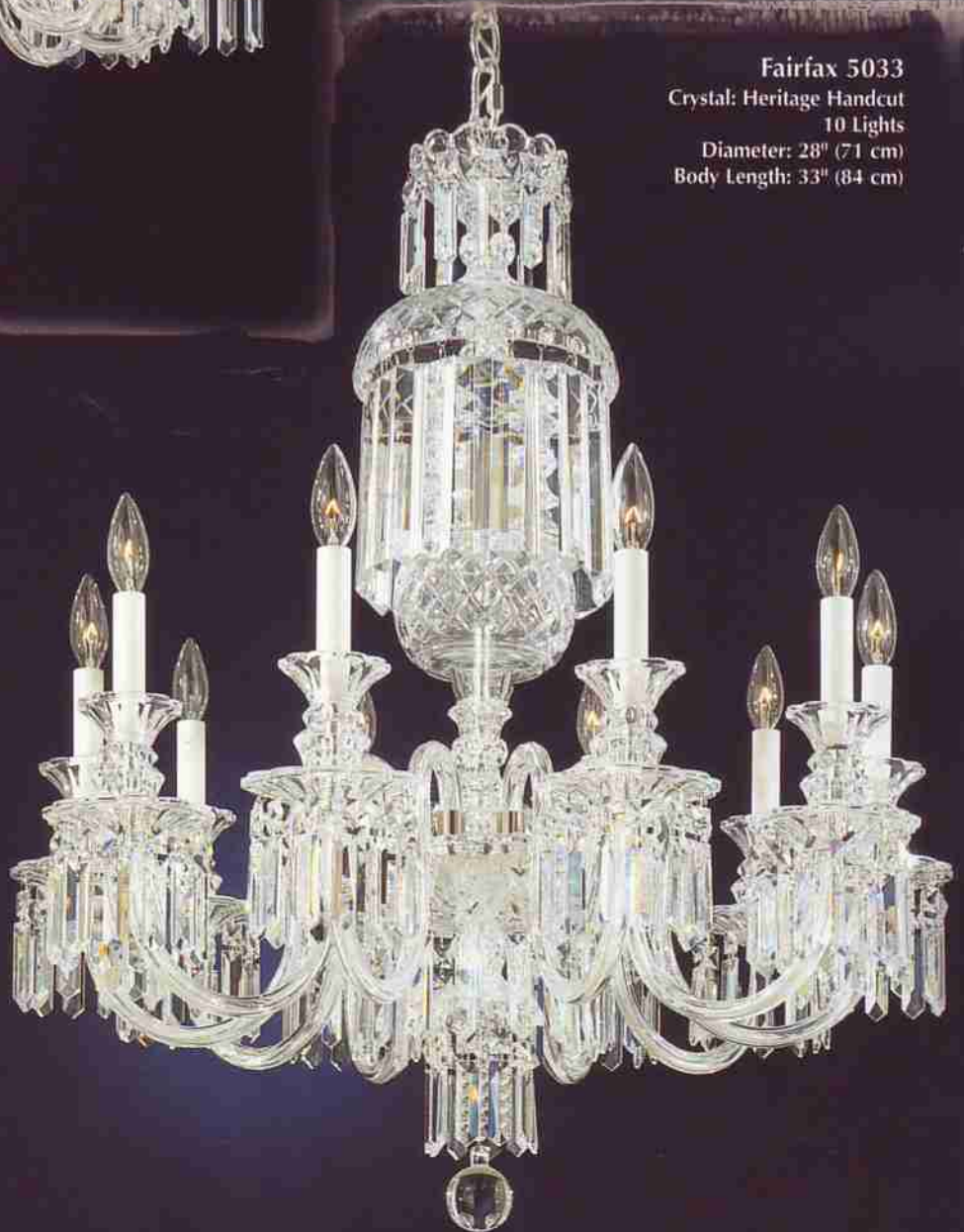
Fairfax 5032

Crystal: Heritage Handcut
8 Lights
Diameter: 24" (61 cm)
Body Length: 30" (76 cm)



Fairfax 5033

Crystal: Heritage Handcut
10 Lights
Diameter: 28" (71 cm)
Body Length: 33" (84 cm)



Sterling (Custom)

Crystal: Strass® Heritage Handcut™ (shown)
or Legacy Collection™

45 Lights (40 candles + 5 interior)

Diameter: 60" (152 cm)

Body Length: 76" (193 cm)

Silver (shown) or gold frame



To order this or other
custom sizes of Sterling,
call Schonbek at 800-836-1892.

Sterling 3610

Crystal: Strass, Heritage Handcut (shown)
or Legacy Collection
25 Lights
Diameter: 45" (114 cm)
Body Length: 61" (155 cm)
Silver (shown) or gold frame



Sterling 3608

Crystal: Strass,[®]
Heritage Handcut™ (shown)
or Legacy Collection™
15 Lights
Diameter: 32" (81 cm)
Body Length: 47" (119 cm)
Silver (shown) or gold frame





Sterling 2998

Crystal: Strass,
Heritage Handcut (shown)
or Legacy Collection
20 Lights
Diameter: 34" (86 cm)
Body Length: 43" (109 cm)
Silver (shown) or gold frame

Sterling 2997

Crystal: Strass,[®]
Heritage Handcut™ (shown)
or Legacy Collection™
12 Lights
Diameter: 29" (74 cm)
Body Length: 37" (94 cm)
Silver (shown) or gold frame



Sterling 3601

Crystal: Strass,
Heritage Handcut (shown)
or Legacy Collection
12 Lights
Diameter: 29" (74 cm)
Body Length: 30" (76 cm)
Silver (shown) or gold frame



Sterling 2994

Crystal: Strass,
Heritage Handcut (shown)
or Legacy Collection
6 Lights
Diameter: 21" (53 cm)
Body Length: 21" (53 cm)
Silver (shown) or gold frame



Sterling 2996

Crystal: Strass,[®]
Heritage Handcut[™] (shown)
or Legacy Collection[™]
9 Lights
Diameter: 27" (69 cm)
Body Length: 31" (79 cm)
Gold (shown) or silver frame



Sterling 2999

Crystal: Strass,
Heritage Handcut (shown)
or Legacy Collection
5 Lights
Diameter: 16" (41 cm)
Body Length: 17 1/2" (44 cm)
Silver (shown) or gold frame

Sterling 2991

Wall sconce

Crystal: Strass, Heritage Handcut (shown) or Legacy Collection

2 Lights Diameter: 15 1/2" (39 cm)

Body Length: 16 1/2" (42 cm) Extension: 5 1/2" (14 cm)

Silver (shown) or gold frame



Sterling 2995

Crystal: Strass,
Heritage Handcut (shown)
or Legacy Collection

7 Lights

Diameter: 25" (64 cm)

Body Length: 26" (66 cm)

Silver (shown) or gold frame



Sterling 2992

Wall sconce

Crystal: Strass,
Heritage Handcut (shown)
or Legacy Collection

3 Lights

Diameter: 15 1/2" (39 cm)

Body Length: 20 1/2" (52 cm)

Extension: 7 1/2" (19 cm)

Silver (shown) or gold frame



Hamilton 5708
Crystal: Heritage Handcut™
12 Lights
Diameter: 30" (76 cm)
Body Length: 44" (112 cm)



Hamilton 5707
Crystal: Heritage Handcut
8 Lights
Diameter: 29" (74 cm)
Body Length: 42" (107 cm)



Custom sizes available.
Call Schonbek at 800-836-1892.

Hamilton 5703

Wall sconce

Crystal: Heritage Handcut

3 Lights

Diameter: 14 1/2" (37 cm)

Body Length: 23" (58 cm)

Extension: 7 1/2" (19 cm)



Hamilton 5706

Crystal: Heritage Handcut™

7 Lights

Diameter: 26" (66 cm)

Body Length: 37 1/2" (95 cm)



Hamilton 5705
Crystal: Heritage Handcut
6 Lights
Diameter: 22" (56 cm)
Body Length: 33" (84 cm)



Hamilton 5701
Wall sconce
Crystal: Heritage Handcut
1 Light
Diameter: 5" (13 cm)
Body Length: 17" (43 cm)
Extension: 7 1/2" (19 cm)

Hamilton 5702
Wall sconce
Crystal: Heritage Handcut
2 Lights
Diameter: 14 1/2" (37 cm)
Body Length: 20" (51 cm)
Extension: 6" (15 cm)



Arlington 1310
Crystal: Legacy Collection™
25 Lights
Diameter: 44½" (113 cm)
Body Length: 62" (157 cm)



Artemis

Arlington 1308
Crystal: Legacy Collection
15 Lights
Diameter: 32" (81 cm)
Body Length: 48" (122 cm)



Custom sizes available.
Call Schonbek at 800-836-1892.

Arlington 1305

Crystal: Legacy Collection™

8 Lights

Diameter: 28" (71 cm)

Body Length: 35 1/2" (90 cm)



Arlington 1301

Wall sconce

Crystal: Legacy Collection

2 Lights

Diameter: 14 1/2" (37 cm)

Body Length: 16" (41 cm)

Extension: 6" (15 cm)



Arlington 1300

Wall sconce

Crystal: Legacy Collection

3 Lights

Diameter: 14 1/2" (37 cm)

Body Length: 19 1/2" (50 cm)

Extension: 7" (18 cm)



Arlington 1302

Crystal: Legacy Collection

5 Lights

Diameter: 20 1/2" (52 cm)

Body Length: 23" (58 cm)



Arlington 1303

Crystal: Legacy Collection

6 Lights

Diameter: 24" (61 cm)

Body Length: 28" (71 cm)





Occasionally we create a crystal chandelier
that is not strictly historical, nor overly
magnificent, not dripping with crystal – but
rather a work of whimsy, partaking of the
nature of flowers and *Nachtmusik*.

We call these designs *Lyrical Crystal*.

lyrical crystal

To intensify the mood of lyricism, we like
to play with colored crystal ornaments,
dainty crystal in heirloom styles, airy
ornamental elements and sinuous shapes.

A room that would be overwhelmed by
a classic or sculptural crystal chandelier
might find itself in perfect harmony
with *Lyrical Crystal*.

Adagio 5112
Crystal: Vintage Collection™
24 Lights
Diameter: 37" (94 cm)
Body Length: 55" (140 cm)
Variety of finishes,
Etruscan Gold (23) shown



Adagio
designer canopy



Adagio 5110

Crystal: Vintage Collection

18 Lights

Diameter: 37" (94 cm)

Body Length: 40" (102 cm)

Variety of finishes,

Antique Silver (48) shown





Adagio 5100
Crystal: Vintage Collection™
3 Lights
Diameter: 13" (33 cm)
Body Length: 21" (53 cm)
Variety of finishes,
Heirloom Silver (44) shown



Adagio 5103
Crystal: Vintage Collection
6 Lights
Diameter: 24" (61 cm)
Body Length: 27" (69 cm)
Variety of finishes,
French Gold (26) shown

Adagio 5102

Wall sconce

Crystal: Vintage Collection

2 Lights

Diameter: 13" (33 cm)

Body Length: 10" (25 cm)

Extension: 4 1/2" (11 cm)

Variety of finishes,

French Gold (26) shown



Adagio 5104

Crystal: Vintage Collection

8 Lights

Diameter: 31" (79 cm)

Body Length: 34" (86 cm)

Variety of finishes,

Silvergild (91) shown



Adagio 5107

Crystal: Vintage Collection
with amber and amethyst
colored crystal fruit

7 Lights, shades optional

Diameter: 27" (69 cm)

Body Length: 30" (76 cm)

Variety of finishes,
Silvergild (91) shown



Adagio 5107
Same chandelier as above,
without shades

Adagio 5101

Crystal: Vintage Collection
with amber and amethyst
colored crystal fruit
5 Lights, shades optional
Diameter: 21" (53 cm)
Body Length: 25" (64 cm)
Variety of finishes,
French Gold (26) shown



Adagio 5101
Same chandelier as above,
without shades



Adagio 5112

Crystal: Vintage Collection™

with amber colored crystal

24 Lights

Diameter: 37" (94 cm)

Body Length: 55" (140 cm)

Variety of finishes,

French Gold (26) shown



Adagio 5110

Crystal: Vintage Collection
with amethyst colored crystal

18 Lights

Diameter: 37" (94 cm)

Body Length: 40" (102 cm)

Variety of finishes,

Antique Silver (48) shown



Adagio 5102 Wall sconce Crystal: Vintage Collection™
with amber colored crystal 2 Lights
Diameter: 13" (33 cm) Body Length: 10" (25 cm)
Extension: 4 1/2" (11 cm) Variety of finishes, French Gold (26) shown



Adagio 5103

Crystal: Vintage Collection with
amber and amethyst colored crystal
6 Lights
Diameter: 24" (61 cm)
Body Length: 27 1/2" (70 cm)
Variety of finishes,
French Gold (26) shown



Adagio 5100

Crystal: Vintage Collection with
amber and amethyst colored crystal

3 Lights

Diameter: 13" (33 cm)

Body Length: 20 $\frac{1}{2}$ " (52 cm)

Variety of finishes,
Silvergild (91) shown



Adagio 5104

Crystal: Vintage Collection with
amber and amethyst colored crystal
8 Lights

Diameter: 31" (79 cm)

Body Length: 33 $\frac{1}{2}$ " (85 cm)

Variety of finishes,
Silvergild (91) shown



Timbrel 6910

Crystal: Vintage Collection™

with rock crystal

10 Lights

Diameter: 23" (58 cm)

Body Length: 37" (94 cm)

Variety of finishes,

Black (51) shown



Timbrel 6908

Crystal: Vintage Collection
with rock crystal

8 Lights

Diameter: 27 1/2" (70 cm)

Body Length: 31 1/2" (80 cm)

Variety of finishes,

Antique Silver (48) shown



Timbrel 6906

Crystal: Vintage Collection™
with rock crystal

6 Lights

Diameter: 22" (56 cm)

Body Length: 25 1/2" (65 cm)

Variety of finishes,
Heirloom Bronze (76) shown



Timbrel 6905

Crystal: Vintage Collection
with rock crystal

5 Lights

Diameter: 18" (46 cm)

Body Length: 23" (58 cm)

Variety of finishes,
French Gold (26) shown



Timbrel 6902

Wall sconce

Crystal: Vintage Collection
with rock crystal

2 Lights

Diameter: 15" (38 cm)

Body Length: 22 1/2" (57 cm)

Extension: 8" (20 cm)

Variety of finishes,
French Gold (26) shown

Madrigal 6884
Crystal: Vintage Collection™
8 Lights
Diameter: 26" (66 cm)
Body Length: 30" (76 cm)
Variety of finishes,
Silvergild (91) shown



Madrigal
designer canopy



Madrigal



Madrigal 6883

Crystal: Vintage Collection

6 Lights

Diameter: 20" (51 cm)

Body Length: 26" (66 cm)

Variety of finishes,

French Gold (26) shown

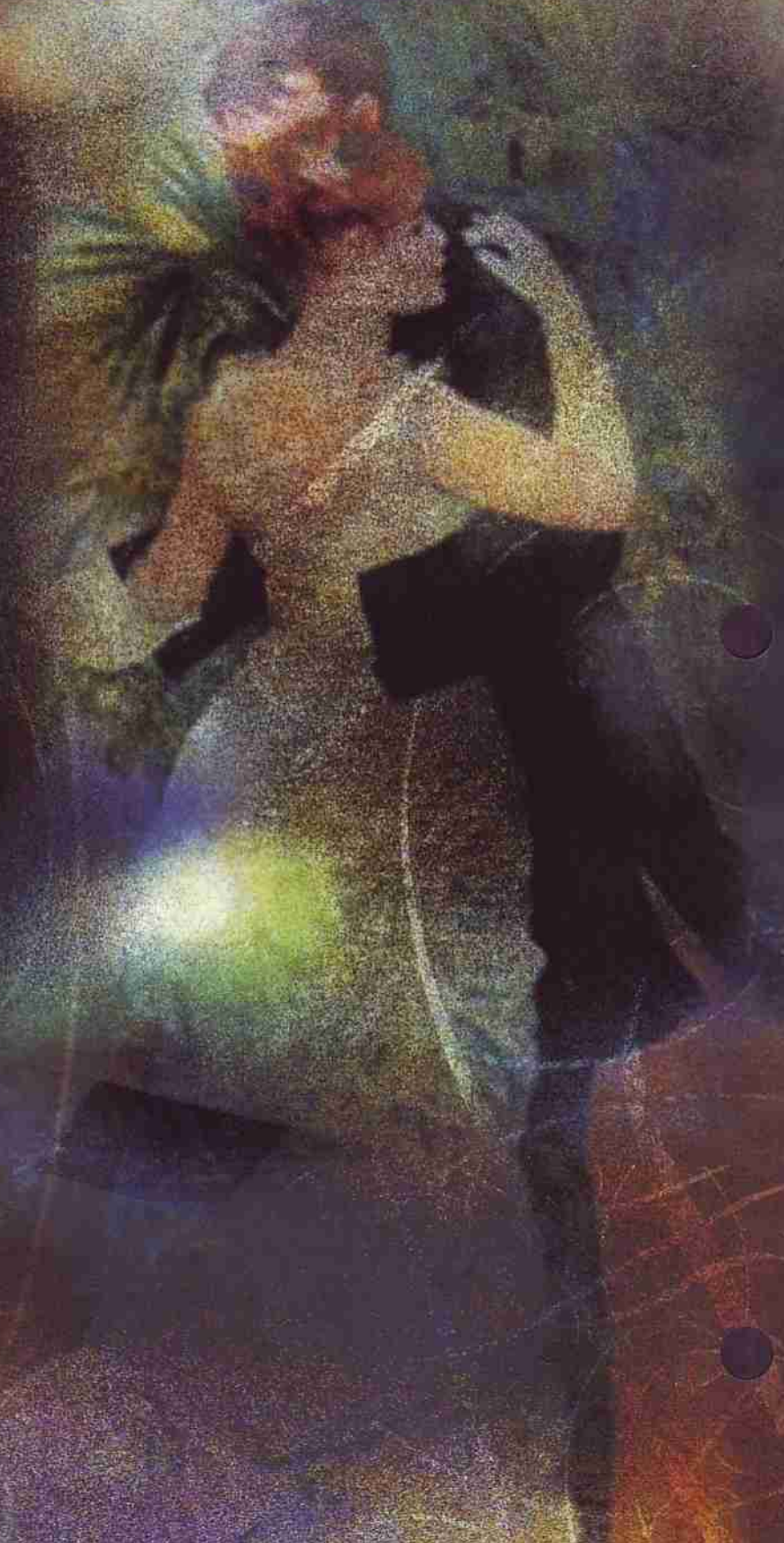
Grand Tradition

What must it have been like in the drawing rooms and ballrooms of past centuries?

In those times of polished manners, grandly furnished rooms and glittering crystal chandeliers, surely love ran deeper and the artistic spirit reached higher than in our hurried and harried times.

We can bring back some of the magic by bringing back the chandeliers, at the very least.

Our collection of crystal chandeliers in the Grand Tradition is solidly based on our own past. The Schonbek company has played an important role in the history of crystal, keeping alive the art of designing classic crystal chandeliers for over 130 years.



addition

New Orleans (Custom)

Crystal: Strass®
Heritage Handcut™ (shown) or
Legacy Collection™
45 Lights
Diameter: 60" (152 cm)
Body Length: 75" (191 cm)
Variety of finishes,
Polished Gold (20) shown

To order this or other custom
sizes of New Orleans, call
Schonbek at 800-836-1892.



New Orleans 3662

Crystal: Strass[®]

Heritage Handcut[™] (shown)
or Legacy Collection[™]

24 Lights

Diameter: 48" (122 cm)

Body Length: 62" (157 cm)

Variety of finishes,

Black Pearl (49) shown



New Orleans 3660

Crystal: Strass,
Heritage Handcut (shown)
or Legacy Collection
18 Lights
Diameter: 36" (91 cm)
Body Length: 44" (112 cm)
Variety of finishes,
Polished Gold (20) shown



New Orleans 3658

Crystal: Strass,[®]

Heritage Handcut™ (shown)

or Legacy Collection™

14 Lights

Diameter: 32" (81 cm)

Body Length: 38 1/2" (98 cm)

Variety of finishes,

Bronze Umber (75) shown



New Orleans 3651

Wall sconce

Crystal: Strass,
Heritage Handcut (shown)
or Legacy Collection
2 Lights

Diameter: 12" (30 cm)

Body Length: 14 1/2" (37 cm)

Extension: 5 1/2" (14 cm)

Variety of finishes,
Antique Silver (48) shown



New Orleans 3657

Crystal: Strass,
Heritage Handcut (shown)
or Legacy Collection
10 Lights

Diameter: 28" (71 cm)

Body Length: 31" (79 cm)

Variety of finishes,
Antique Silver (48) shown



New Orleans 3650

Wall sconce Crystal: Strass[®], Heritage Handcut[™] (shown) or Legacy Collection
1 Light Diameter: 4½" (11 cm) Body Length: 13" (33 cm)
Extension: 6" (15 cm) Variety of finishes, French Gold (26) shown



New Orleans 3656

Crystal: Strass, Heritage
Handcut (shown) or
Legacy Collection
7 Lights
Diameter: 24" (61 cm)
Body Length: 27" (69 cm)
Variety of finishes,
French Gold (26) shown



New Orleans 3652

Wall sconce
Crystal: Strass,
Heritage Handcut (shown)
or Legacy Collection[™]
3 Lights
Diameter: 12" (30 cm)
Body Length: 18½" (47 cm)
Extension: 6" (15 cm)
Variety of finishes,
Etruscan Gold (23) shown



New Orleans 3661

Crystal: Strass,
Heritage Handcut (shown)
or Legacy Collection
20 Lights
Diameter: 36" (91 cm)
Body Length: 56" (142 cm)
Variety of finishes,
Polished Silver (40) shown



Custom sizes available. Call
Schonbek at 800-836-1892.



New Orleans 3648

Crystal: Strass,[®]
Heritage Handcut™ (shown)
or Legacy Collection™
4 Lights
Diameter: 12" (30 cm)
Body Length: 16 1/2" (42 cm)
Variety of finishes,
Polished Silver (40) shown



New Orleans 3659

Crystal: Strass,
Heritage Handcut (shown)
or Legacy Collection
14 Lights
Diameter: 32" (81 cm)
Body Length: 53" (135 cm)
Variety of finishes,
Etruscan Gold (23) shown

Solitaire 1818

Crystal: Strass or Gemcut™ (shown)

36 Lights (18 candles + 18 interior)

Diameter: 43 $\frac{1}{2}$ " (110 cm)

Body Length: 44" (112 cm)



Custom sizes available. Call
Schonbek at 800-836-1892.

Solitaire 1819

Crystal: Strass® (shown) or Gemcut™

18 Lights

Diameter: 33" (84 cm)

Body Length: 35" (89 cm)



Solitaire 1809

Wall sconce

Crystal: Strass (shown) or Gemcut

3 Lights

Diameter: 13 1/2" (34 cm)

Body Length: 16" (41 cm)

Extension: 7" (18 cm)



Solitaire 1817

Crystal: Strass (shown) or Gemcut

28 Lights (15 candles + 13 interior)

Diameter: 36" (91 cm)

Body Length: 32" (81 cm)



Solitaire 1799

Wall sconce

Crystal: Strass® (shown)
or Gemcut™

1 Light

Diameter: 5" (13 cm)

Body Length: 11" (28 cm)

Extension: 7" (18 cm)



Solitaire 1808

Wall sconce

Crystal: Strass (shown)
or Gemcut

2 Lights

Diameter: 12" (30 cm)

Body Length: 12" (30 cm)

Extension: 4 1/2" (11 cm)

Solitaire 1813

Crystal: Strass (shown)
or Gemcut

13 Lights

Diameter: 26" (66 cm)

Body Length: 28" (71 cm)





Solitaire 1807

Crystal: Strass (shown)
or Gemcut

19 Lights (9 candles + 10 interior)

Diameter: 28" (71 cm)

Body Length: 27 1/2" (70 cm)

Solitaire 1804

Crystal: Strass (shown)
or Gemcut

10 Lights

Diameter: 19 1/2" (50 cm)

Body Length: 15" (38 cm)



Solitaire 1800

Crystal: Strass (shown)
or Gemcut

5 Lights

Diameter: 15" (38 cm)

Body Length: 10" (25 cm)



Solitaire 1806

Crystal: Strass[®] (shown)
or Gemcut™

13 Lights (6 candles + 7 interior)

Diameter: 24" (61 cm)

Body Length: 24" (61 cm)



Solitaire 1812

Crystal: Strass (shown)
or Gemcut

13 Lights

Diameter: 26" (66 cm)

Body Length: 16" (41 cm)

Solitaire 1810

Crystal: Strass (shown)
or Gemcut

3 Lights

Diameter: 13" (33 cm)

Body Length: 8 1/2" (22 cm)





Solitaire 1801
Crystal: Strass
or Gemcut (shown)
5 Lights
Diameter: 15" (38 cm)
Body Length: 12½" (32 cm)



Solitaire 1803
Crystal: Strass or Gemcut (shown)
7 Lights
Diameter: 17½" (44 cm)
Body Length: 16" (41 cm)



Solitaire 1805
Crystal: Strass or Gemcut (shown)
10 Lights
Diameter: 19½" (50 cm)
Body Length: 18" (46 cm)



Solitaire 1811
Crystal: Strass or Gemcut (shown)
3 Lights
Diameter: 13" (33 cm)
Body Length: 10½" (27 cm)

Century 1705

Crystal: Heritage Handcut™

6 Lights

Diameter: 21" (53 cm)

Body Length: 20" (51 cm)



Century 1701

Wall sconce

Crystal: Heritage Handcut

1 Light

Diameter: 4 7/8" (11 cm)

Body Length: 13" (33 cm)

Extension: 6" (15 cm)

Century 1712

Crystal: Heritage Handcut

12 Lights

Diameter: 30" (76 cm)

Body Length: 29 1/2" (75 cm)



Century 1829

Crystal: Heritage Handcut

1 Light

Diameter: 12 1/2" (32 cm)

Body Length: 14" (36 cm)



Century



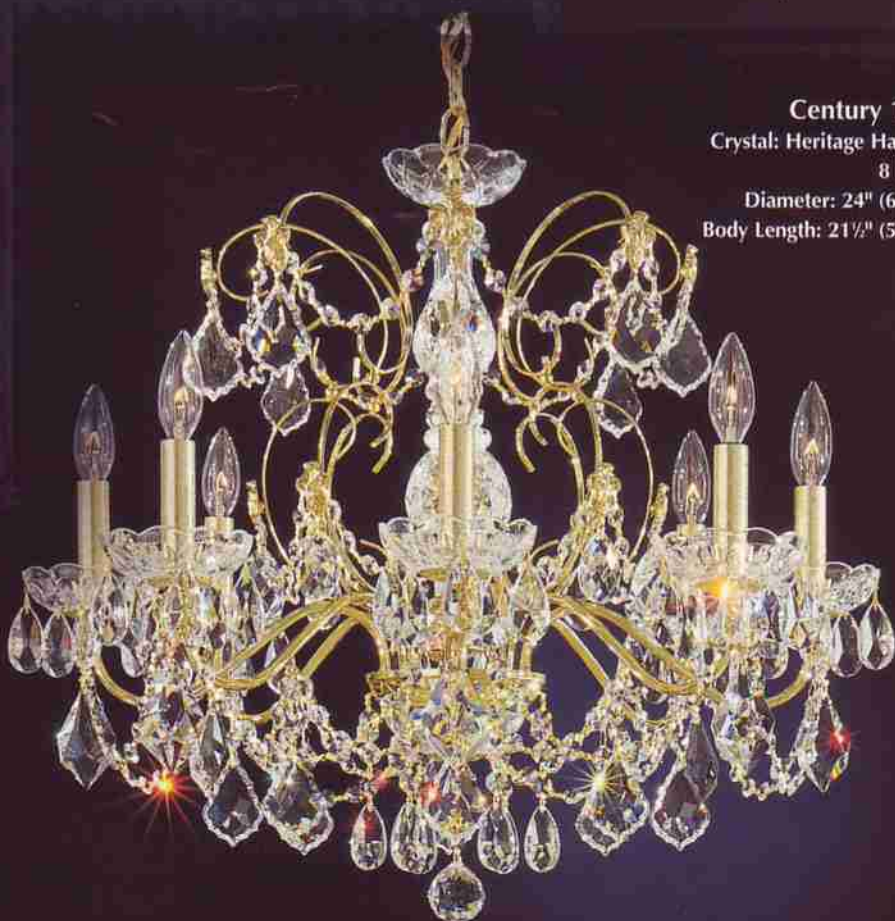
Century 1709
Crystal: Heritage Handcut
9 Lights
Diameter: 26" (66 cm)
Body Length: 22" (56 cm)

*Century
1702*

Century 1702
Wall sconce
Crystal: Heritage Handcut
2 Lights
Diameter: 12" (30 cm)
Body Length: 14" (36 cm)
Extension: 5 1/2" (14 cm)



Century 1703
Wall sconce
Crystal: Heritage Handcut
3 Lights
Diameter: 13" (33 cm)
Body Length: 17 1/2" (44 cm)
Extension: 6" (15 cm)



Century 1707
Crystal: Heritage Handcut
8 Lights
Diameter: 24" (61 cm)
Body Length: 21 1/2" (55 cm)

Contessa 4824

Crystal: Strass® (shown) or Gemcut™

36 Lights (24 candles + 12 interior)

Diameter: 36" (91 cm)

Body Length: 34" (86 cm)

Silver (shown) or gold frame



Custom sizes available. Call
Schonbek at 800-836-1892.



Contessa 4825
Crystal: Strass (shown)
or Gemcut
22 Lights
Diameter: 24" (61 cm)
Body Length: 29" (74 cm)
Gold (shown) or silver frame

Contessa 4820
Wall sconce
Crystal: Strass (shown) or Gemcut
3 Lights
Diameter: 13" (33 cm)
Body Length: 13" (33 cm)
Extension: 6 1/2" (17 cm)
Gold (shown) or silver frame



Contessa 4821

Crystal: Strass® (shown)
or Gemcut™

12 Lights

Diameter: 17" (43 cm)

Body Length: 16" (41 cm)

Gold (shown)
or silver frame



Contessa 4822

Crystal: Strass (shown)
or Gemcut

18 Lights

Diameter: 24" (61 cm)

Body Length: 18" (46 cm)

Gold (shown) or silver frame





Contessa 4823

Crystal: Strass (shown) or Gemcut
24 Lights (12 candles + 12 interior)
Diameter: 26" (66 cm)
Body Length: 24" (61 cm)
Silver (shown) or gold frame



Contessa 4826

Crystal: Strass (shown) or Gemcut
12 Lights
Diameter: 17" (43 cm)
Body Length: 11" (28 cm)
Gold (shown) or silver frame

Madison 1596

Crystal: Legacy Collection™

12 Lights

Diameter: 30" (76 cm)

Body Length: 30" (76 cm)



Madison 1590

Crystal: Legacy Collection

5 Lights

Diameter: 20" (51 cm)

Body Length: 21" (53 cm)



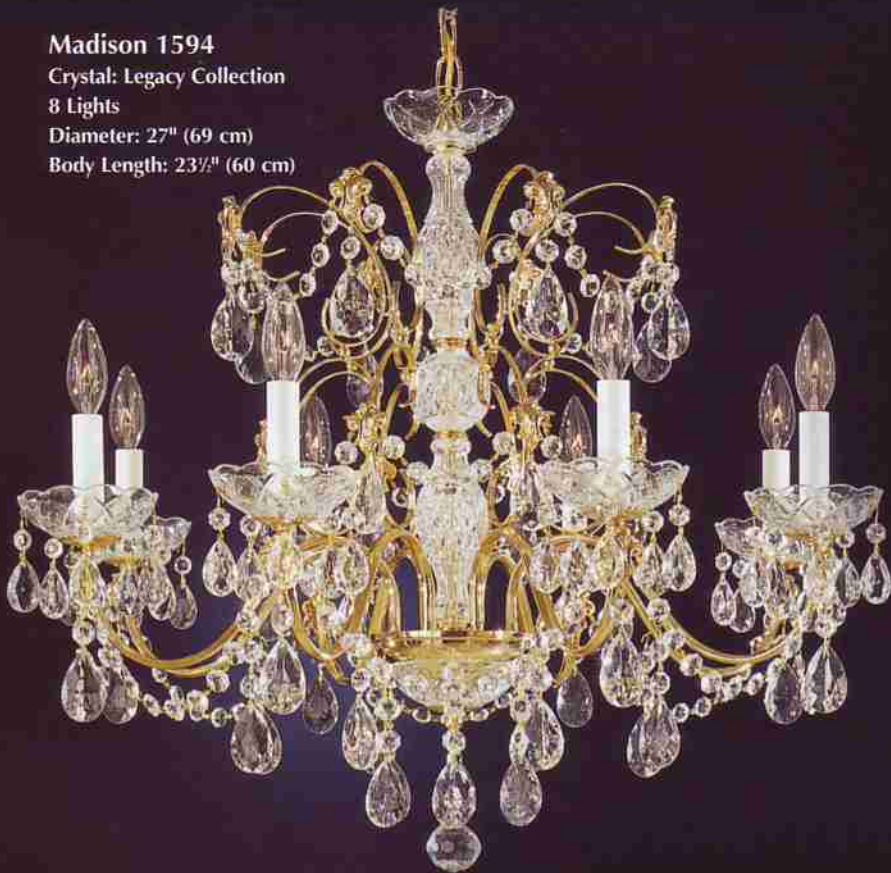
Madison 1594

Crystal: Legacy Collection

8 Lights

Diameter: 27" (69 cm)

Body Length: 23 1/2" (60 cm)



Madison 1586

Wall sconce

Crystal: Legacy Collection

2 Lights

Diameter: 12" (30 cm)

Body Length: 15" (38 cm)

Extension: 6" (15 cm)

Madison 1592

Crystal: Legacy Collection

6 Lights

Diameter: 24" (61 cm)

Body Length: 22" (56 cm)



Rhapsody 1948

Crystal: Heritage Handcut™

12 Lights

Diameter: 36" (91 cm)

Body Length: 34" (86 cm)



Rhapsody 1946

Crystal: Heritage Handcut

10 Lights

Diameter: 24" (61 cm)

Body Length: 26" (66 cm)

Black Pearl (49) shown



LaBelle 2962

Crystal: Heritage Handcut
12 Lights (6 candles + 6 interior)
Diameter: 23" (58 cm)
Body Length: 20" (51 cm)

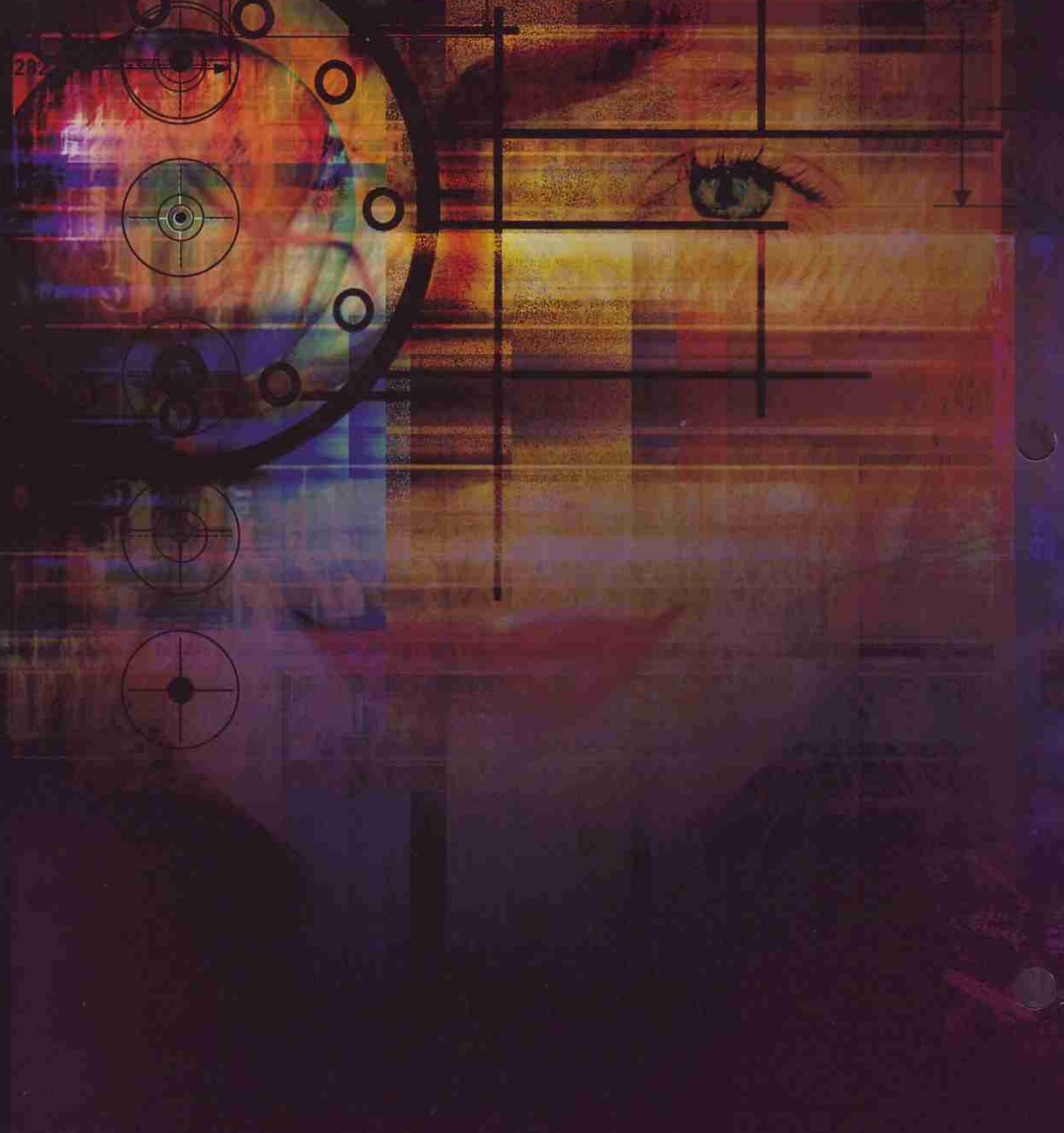


LaBelle 2965

Crystal: Heritage Handcut
14 Lights
(8 candles + 6 interior)
Diameter: 26" (66 cm)
Body Length: 22 1/2" (57 cm)



Postmodern



Crystal

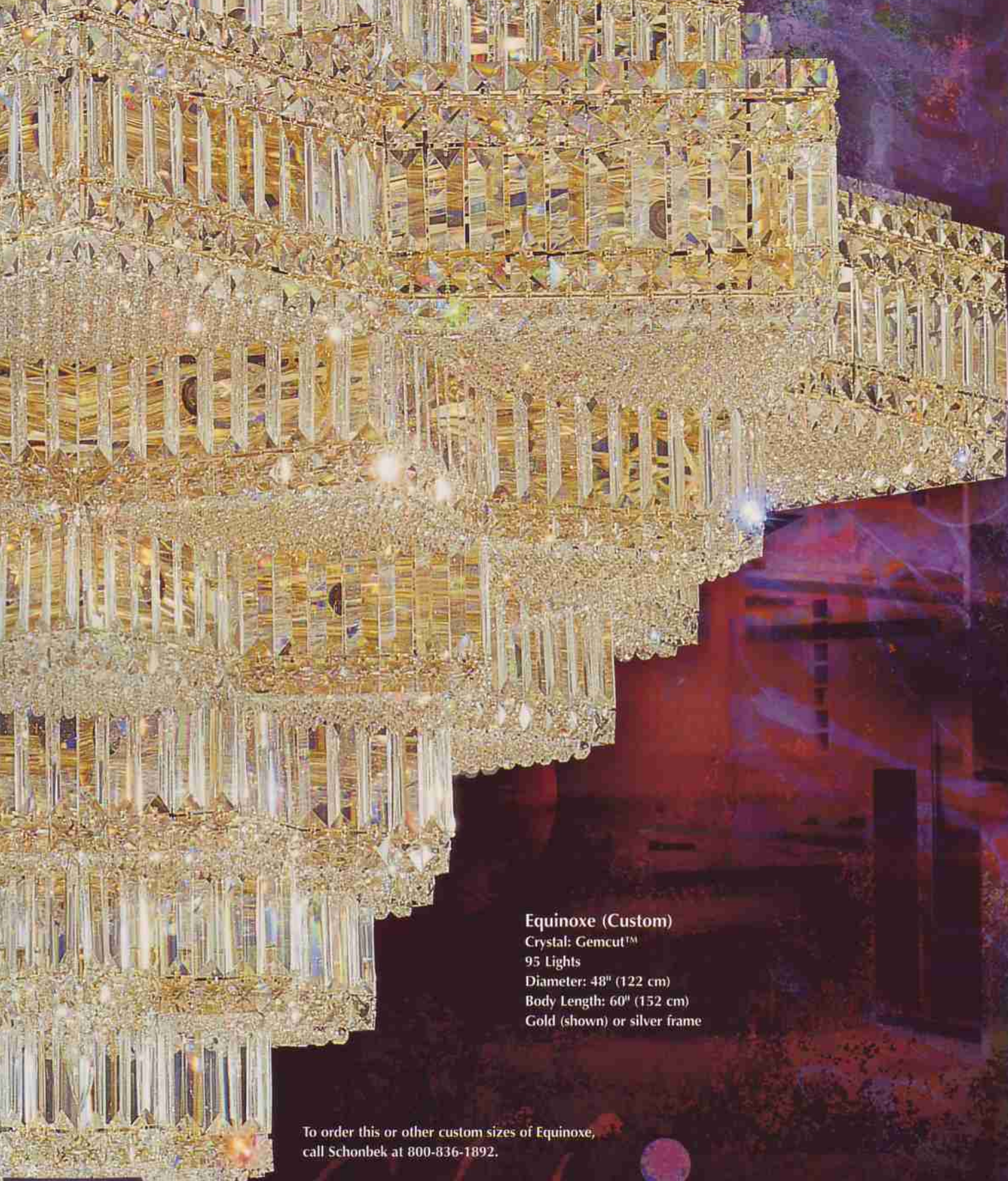


“less is more” is becoming less and less true. decades of minimalism have left us starved for an outbreak of brilliance.

thus, in the work of trend-sensitive designers we now see richly textured fabrics, intricate marble surfaces, witty trompe l’oeil effects and, wildest of all, the fire of crystal.

we schonbeks are pioneering a new era of iconoclastic crystal by creating new sculptural forms for crystal lighting.

a postmodern schonbek is all the more resonant for having a lineage going back to nineteenth-century bohemia.



Equinox (Custom)

Crystal: Gemcut™

95 Lights

Diameter: 48" (122 cm)

Body Length: 60" (152 cm)

Gold (shown) or silver frame

To order this or other custom sizes of Equinox,
call Schonbek at 800-836-1892.

EQUINOX

Equinoxe 2727

Crystal: Gemcut

63 Lights

Diameter: 29 1/2" (75 cm)

Body Length: 58" (147 cm)

Silver (shown) or gold frame



Equinoxe 2726

Crystal: Gemcut™

45 Lights

Diameter: 29 1/2" (75 cm)

Body Length: 36" (91 cm)

Gold (shown) or silver frame



OXE

Equinoxe 2725

Crystal: Gemcut
35 Lights
Diameter:
22 $\frac{1}{2}$ " (57 cm)
Body Length:
41 $\frac{1}{2}$ " (105 cm)
Gold (shown)
or silver
frame



Equinoxe 2724

Crystal: Gemcut
21 Lights
Diameter: 22 $\frac{1}{2}$ " (57 cm)
Body Length: 28" (71 cm)
Silver (shown) or gold frame





Equinoxe 2716
Crystal: Gemcut™
31 Lights
Diameter: 29 1/2" (75 cm)
Body Length: 23" (58 cm)
Gold (shown) or silver frame

Custom sizes available.
Call Schonbek at 800-836-1892.



Equinoxe 2710
Crystal: Gemcut
5 Lights
Diameter: 12" (30 cm)
Body Length: 10 1/2" (27 cm)
Gold (shown) or silver frame

Equinoxe 2712
Crystal: Gemcut
7 Lights
Diameter: 17" (43 cm)
Body Length: 15" (38 cm)
Gold (shown) or silver frame



Equinoxe 2714
Crystal: Gemcut
15 Lights
Diameter: 22 1/2" (57 cm)
Body Length: 19" (48 cm)
Silver (shown) or gold frame





Equinoxe 2733

Crystal: Gemcut™
13 Lights
Diameter: 22½" (57 cm)
Body Length: 13½" (34 cm)
Gold (shown) or silver frame



Equinoxe 2731

Crystal: Gemcut
5 Lights
Diameter: 12" (30 cm)
Body Length: 9½" (24 cm)
Gold (shown) or silver frame



Equinoxe 2732

Crystal: Gemcut
9 Lights
Diameter: 17" (43 cm)
Body Length: 10½" (27 cm)
Gold (shown) or silver frame



Equinoxe 2734

Crystal: Gemcut
29 Lights
Diameter: 29½" (75 cm)
Body Length: 16" (41 cm)
Gold (shown) or silver frame

Ø 0.608"

Equinoxe 2703
Wall sconce
Crystal: Gemcut
6 Lights
Diameter: 17" (43 cm)
Body Length: 13" (33 cm)
Extension: 8 1/2" (22 cm)
Silver (shown) or gold frame



Equinoxe 2711
Crystal: Gemcut
9 Lights
Diameter: 12" (30 cm)
Body Length: 17" (43 cm)
Gold (shown) or silver frame



Equinoxe 2713
Crystal: Gemcut
13 Lights
Diameter: 17" (43 cm)
Body Length: 24" (61 cm)
Gold (shown) or silver frame

Colonade (Custom)
Crystal: Gemcut™
101 Lights
Diameter: 39" (99 cm)
Body Length: 80" (203 cm)



To order this or other custom sizes of Colonade,
call Schonbek at 800-836-1892.

Colonade 1926

Crystal: Gemcut

16 Lights

Diameter: 13" (33 cm)

Body Length: 27" (69 cm)



Colonade 1934

Crystal: Gemcut

51 Lights

Diameter: 28" (71 cm)

Body Length: 44" (112 cm)





Colonade 1928

Crystal: Gemcut™

19 Lights

Diameter: 16" (41 cm)

Body Length: 29" (74 cm)



Colonade 1932

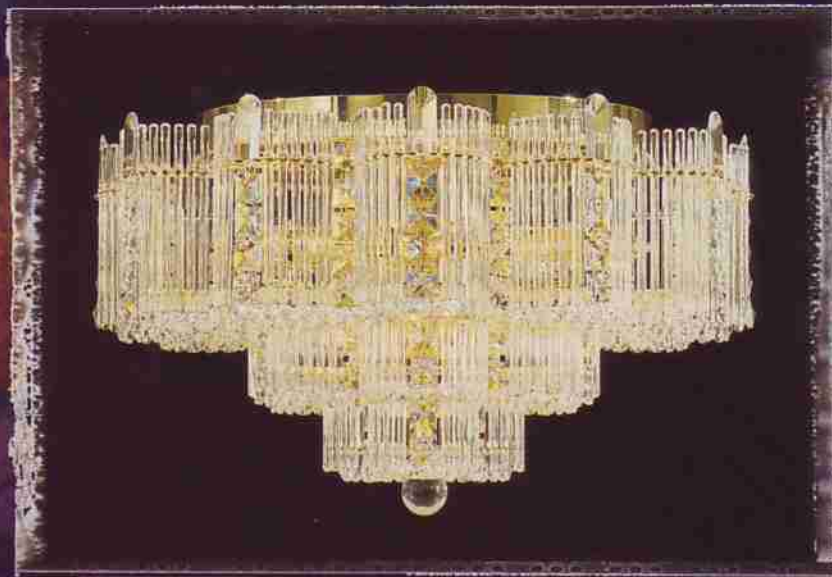
Crystal: Gemcut

40 Lights

Diameter: 22" (56 cm)

Body Length: 40" (102 cm)

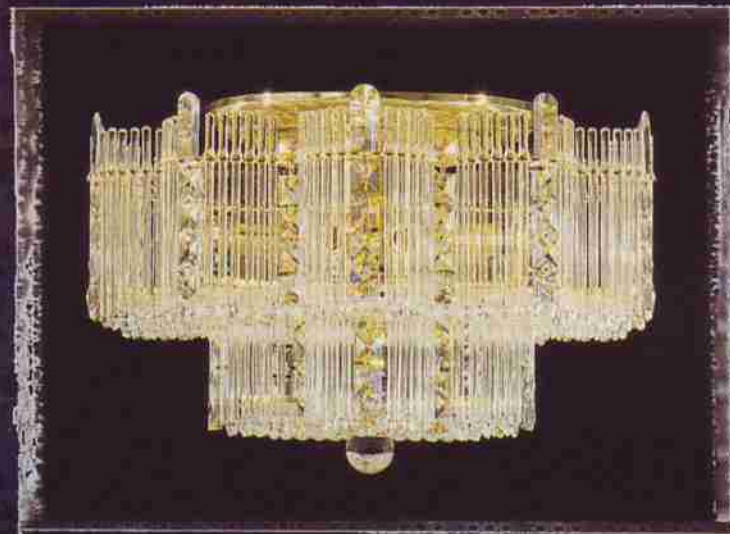




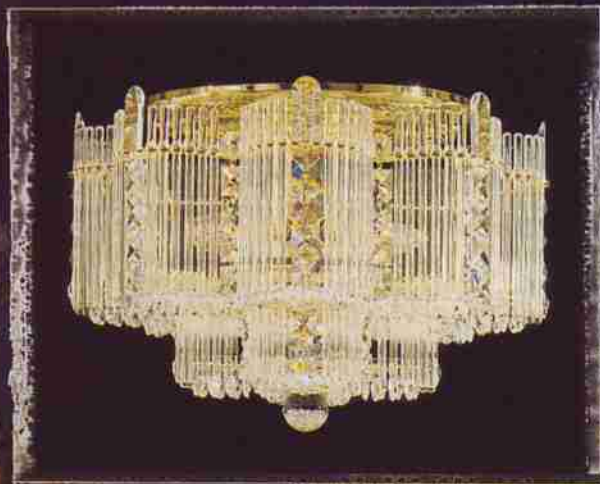
Colonade 1939
Crystal: Gemcut
15 Lights
Diameter: 22" (56 cm)
Body Length: 13" (33 cm)

Custom sizes available.
Call Schonbek at 800-836-1892.

Colonade 1938
Crystal: Gemcut
10 Lights
Diameter: 19" (48 cm)
Body Length: 12" (30 cm)



Colonade 1937
Crystal: Gemcut
8 Lights
Diameter: 16" (41 cm)
Body Length: 11" (28 cm)



Colonade 1936
Crystal: Gemcut
6 Lights
Diameter: 13" (33 cm)
Body Length: 11" (28 cm)



Colonade 1933

Crystal: Gemcut™

33 Lights

Diameter: 28" (71 cm)

Body Length: 29" (74 cm)



Custom sizes available.
Call Schonbek at 800-836-1892.



Colonade 1925

Crystal: Gemcut

10 Lights

Diameter: 13" (33 cm)

Body Length: 14 1/2" (37 cm)



Colonade 1931

Crystal: Gemcut

24 Lights

Diameter: 22" (56 cm)

Body Length: 24" (61 cm)

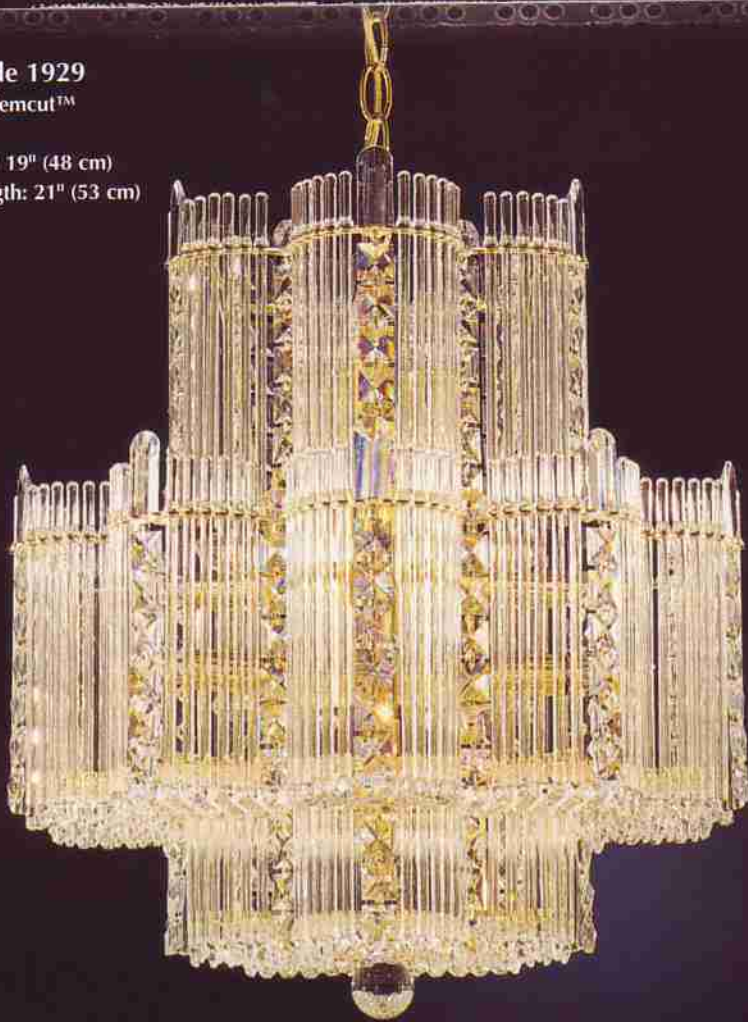
Colonade 1929

Crystal: Gemcut™

17 Lights

Diameter: 19" (48 cm)

Body Length: 21" (53 cm)



Colonade 1927

Crystal: Gemcut

13 Lights

Diameter: 16" (41 cm)

Body Length: 17" (43 cm)



Colonade 1919
Wall sconce
Crystal: Gemcut
2 Lights
Diameter: 5" (13 cm)
Body Length: 12½" (32 cm)
Extension: 3" (8 cm)

Colonade 1920

Wall sconce
Crystal: Gemcut
3 Lights
Diameter: 8" (20 cm)
Body Length: 12" (30 cm)
Extension: 4½" (11 cm)



Colonade 1921

Bath bar
Crystal: Gemcut
3 Lights
Diameter: 18" (46 cm)
Body Length: 6½" (17 cm)
Extension: 4½" (11 cm)

Colonade 1922

Bath bar
Crystal: Gemcut
5 Lights
Diameter: 27½" (70 cm)
Body Length: 6½" (17 cm)
Extension: 4½" (11 cm)



Colonade 1923

Bath bar
Crystal: Gemcut
7 Lights
Diameter: 37" (94 cm)
Body Length: 6½" (17 cm)
Extension: 4½" (11 cm)



Colonade 1924

Bath bar
Crystal: Gemcut
9 Lights
Diameter: 47" (119 cm)
Body Length: 6½" (17 cm)
Extension: 4½" (11 cm)



Jubilee appears in the
James Bond movie,
"Die Another Day," release
date November 2002.



Jubilee 2667
Crystal: Gemcut™
63 Lights
Diameter: 28" (71 cm)
Body Length: 70" (178 cm)
Gold (shown) or silver frame



Jubilee 2661
Crystal: Gemcut
25 Lights
Diameter: 17" (43 cm)
Body Length: 44½" (113 cm)
Gold (shown) or silver frame



Jubilee 2663
Crystal: Gemcut
41 Lights
Diameter: 20" (51 cm)
Body Length: 52" (132 cm)
Silver (shown) or gold frame

Custom sizes available.
Call Schonbek at 800-836-1892.



Jubilee 2657

Crystal: Gemcut™

33 Lights

Diameter: 27¹/₂" (70 cm)

Body Length: 40" (102 cm)

Silver (shown) or gold frame

Custom sizes available.
Call Schonbek at 800-836-1892.



Jubilee 2653

Crystal: Gemcut

21 Lights

Diameter: 20 1/2" (52 cm)

Body Length: 32" (81 cm)

Gold (shown) or silver frame

Jubilee appears in the James Bond movie, "Die Another Day," release date November 2002.



Jubilee 2651

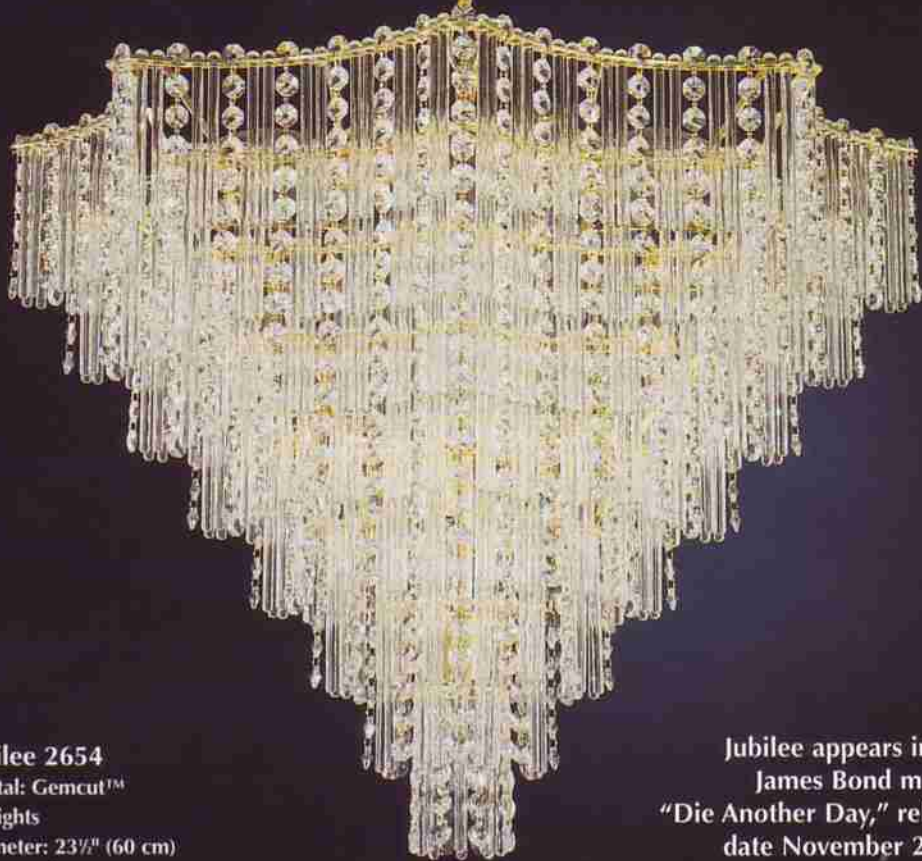
Crystal: Gemcut

17 Lights

Diameter: 17 1/2" (44 cm)

Body Length: 27" (69 cm)

Gold (shown) or silver frame



Jubilee 2654

Crystal: Gemcut™
15 Lights
Diameter: 23 1/2" (60 cm)
Body Length: 20" (51 cm)
Gold (shown) or silver frame

Jubilee appears in the
James Bond movie,
"Die Another Day," release
date November 2002.



Jubilee 2650

Crystal: Gemcut
9 Lights
Diameter: 17 1/2" (44 cm)
Body Length: 16" (41 cm)
Gold (shown) or silver frame

Jubilee 2673

Wall sconce

Crystal: Gemcut

4 Lights Diameter: 11" (28 cm)

Body Length: 15" (38 cm)

Extension: 6" (15 cm)

Gold (shown) or silver frame



Jubilee 2652

Crystal: Gemcut

13 Lights

Diameter: 20 1/2" (52 cm)

Body Length: 18" (46 cm)

Gold (shown) or silver frame



Jubilee 2648

Crystal: Gemcut

7 Lights

Diameter: 14" (36 cm)

Body Length: 14" (36 cm)

Gold (shown) or silver frame

Jubilee 2670

Wall sconce

Crystal: Gemcut

6 Lights

Diameter: 14" (36 cm)

Body Length: 14" (36 cm)

Extension: 8" (20 cm)

Gold (shown) or silver frame

